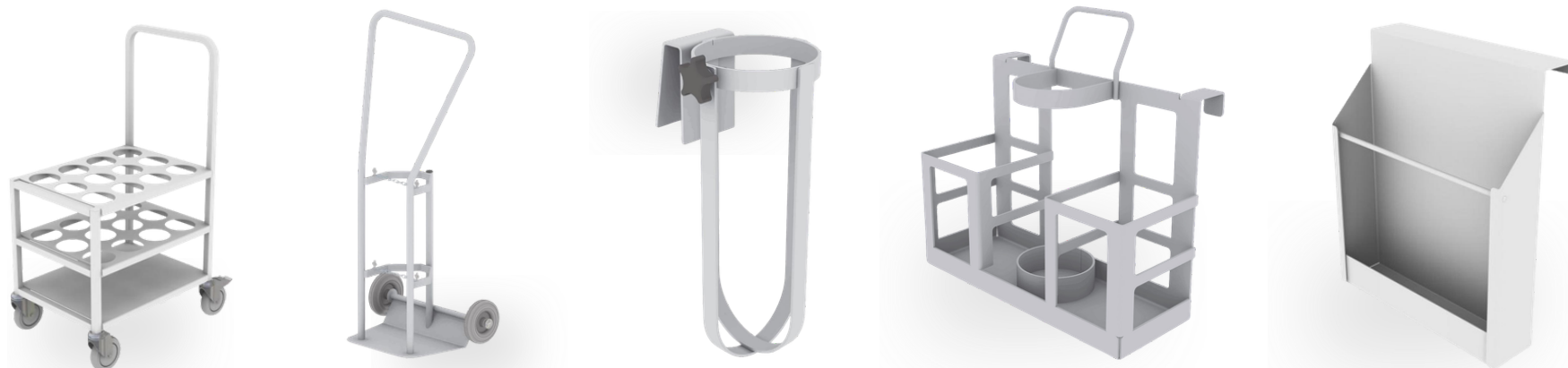


Chart & Cylinder Holders



CYH, CYT & PCH Holders

Shuttleworth's range of chart holders and gas cylinder transport solutions is designed to support efficient, safe, and organised clinical workflows. For smaller capacity needs, the fixed Cylinder Holder accommodates 'D' sized cylinders securely, while the portable version fits up to size 'E' cylinders and includes hooks for direct bed mounting, supporting mobility and continuous therapy at the patient's side. When movement between wards is required, the single-cylinder trolley offers a robust yet lightweight option for F/G cylinders, providing staff with a safe and ergonomic transport method. For larger-scale management, the high-capacity trolley accommodates up to twelve D/E cylinders, ensuring reliable and efficient transfer of supplies across hospital departments while reducing manual handling risks.

The A4 chart holder provides a compact and accessible method for storing and displaying patient records, notes, or charts. Constructed from mild steel and finished to withstand daily cleaning, it ensures patient records remain organised and readily accessible.

Code	Width	Depth	Height
CYH001	13.2cm	40.7cm	34.1cm
CYH002	40.7cm	15cm	40.4cm
CYT001	56.3cm	28.2cm	116.5cm
CYT002	62.5cm	46.7cm	106.2cm
PCH002	26.2cm	6.2cm	31.5cm

Configuration

CYH001: Cylinder Holder, 'D' Sized Cylinders

CYH002: Portable Cylinder Holder, Fits Up To Size 'E' Cylinders, Hooks for Bed Mounting

CYT001: Cylinder Trolley, Holds 1x F/G Size Cylinder

CYT002: Cylinder Trolley, D/E Sized, Holds 12x Cylinders

PCH002: Chart Holder, A4 Capacity, Mild Steel