

Solace Dialysis Chair



SOLACE-001 Dialysis Chair

The Solace Dialysis Chair is a robust and versatile solution designed to meet both patient comfort and clinical efficiency during lengthy treatments.

It is built on an epoxy-coated steel tube frame with a scissor-lift mechanism that offers excellent stability while supporting up to 230 kg safe working load. An integrated portering handle enables straightforward relocation between treatment areas.

The chair features a fully adjustable three-section platform with electric controls compliant with EN 60601-1, allowing independent adjustment of height, backrest, leg rest, and Trendelenburg positioning via an intuitive handset. Contoured polyurethane armrests are also fully adjustable to enhance patient comfort.

For practical operation, the handset includes preprogrammed settings such as an emergency Trendelenburg (shock position) and a patient exit position that returns the chair to its lowest height and seat configuration. Mobility is supported by four 125 mm swivel castors with central brake.

Code	Ext Dims	Patient Surface	Backrest Dims	Seat Dims	Legrest Dims
SOLACE-001	220 x 87.5cm	214 x 57cm	88 x 57cm	54 x 57cm	72 x 57cm

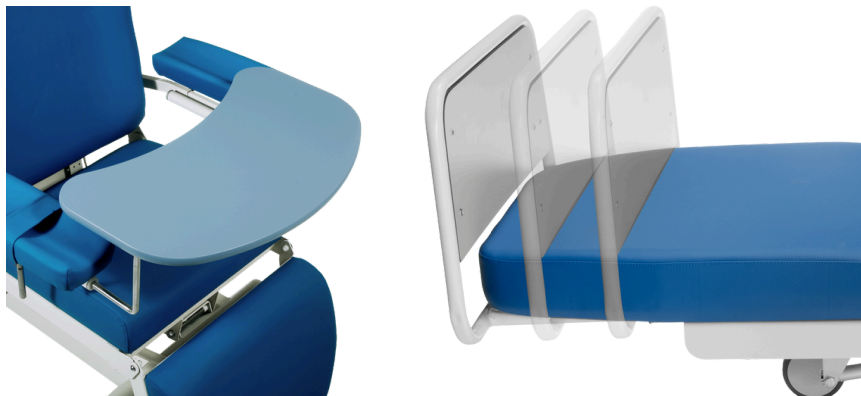
Code	Height Adj	Backrest Tilt	Footrest Dims	SWL
SOLACE-001	51-76cm	72°	25 x 58cm	230kg

Configuration

SOLACE-001: Solace Dialysis Chair - Standard Configuration



Accessories	Code
IV Pole for Solace Chair	SOLACE-AC002
Food/Activity Tray for Solace Chair	SOLACE-AC003
Paper Roll Holder for Solace Chair	SOLACE-AC004



Handling

The Solace Dialysis Chair is designed to integrate seamlessly into busy treatment environments, offering smooth mobility and precise positioning.

Four large swivel castors, a central brake system, and an integrated push handle allow effortless relocation between bays or departments.

The handset-operated electric adjustments provide quick and accurate changes to height, backrest, and leg rest angles, streamlining workflow for clinical teams.

Comfort

Every aspect of the Solace Chair is engineered for long-duration treatments, ensuring patients remain supported and at ease.

The high-density foam cushioning is contoured to relieve pressure and maintain circulation, while the wide, fully adjustable armrests provide a stable surface for therapy access. Upholstered in premium, antimicrobial, and easy-clean fabric, the seating surface combines durability with a soft, welcoming feel. Sections fully adjustable with medical grade electric motors compliant with EN 60601-1.

Safety

The robust steel frame and scissor-lift mechanism ensure exceptional stability throughout all adjustments, even under full safe working load.

Emergency positioning functions, including rapid Trendelenburg, are built into the handset controls for immediate response when required. All materials meet NHS infection control requirements and comply with BS7176 (Medium Hazard) fire safety standards, ensuring full regulatory compliance for medical use. Conforms to Regulation (EU) 2017/745.