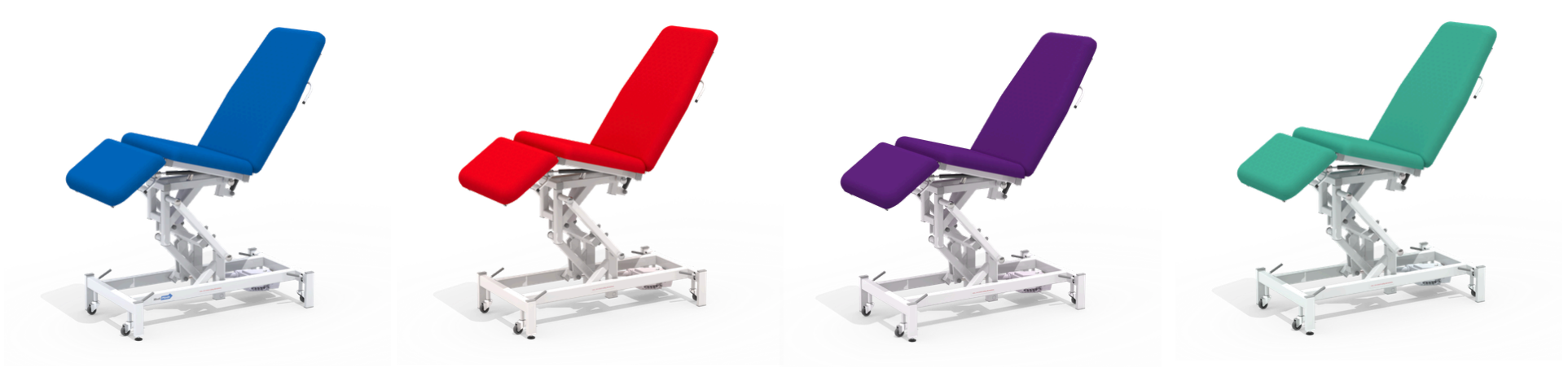


# Ultrasound Plinths



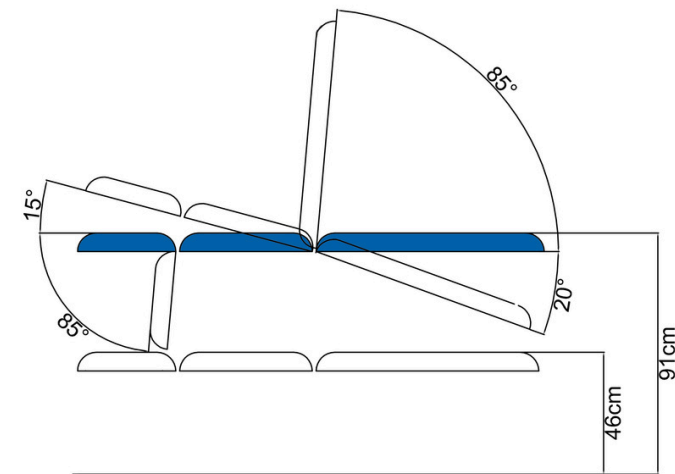
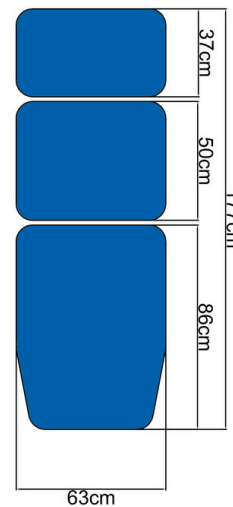
## US03TE

The Medi-Plinth Ultrasound Couch delivers enhanced positioning versatility and clinician ergonomics, combining electric controls with ergonomic comfort to support a wide range of diagnostic procedures.

Its design features variable electric height adjustment and an electrically adjustable tilt function with Trendelenburg capability, enabling smooth lateral positioning for both patient and operator access. The back and leg sections are assisted by gas springs to allow seamless recline and tilt movement.

Additional practical design elements include a drop-end foot section that lowers to approximately 85°, retractable rubber castors for straightforward mobility, and an adjustable leveling foot for use on uneven flooring. Designed with clinical workflows in mind, the couch features an extra-low entry height to facilitate smooth wheelchair transfers. Upholstery is MRSA-resistant, antibacterial, fire-retardant, and available in 14 standard vinyl colours, with an optional 750 mm extra-wide surface for additional patient comfort.

Code	Mechanism	SWL	Surface	Footrest Adj	Backrest Adj
US03TE	Electric	260kg	177 x 63 cm	-85°	85°



Accessories	Code
Footswitch	FO02
Extra Wide Upholstery (75cm)	EW1
Breathing Hole	BR02
Paper Roll Holder	PR01
Detachable Head Rest	DHR01
Adjustable Arm Rests	DE01

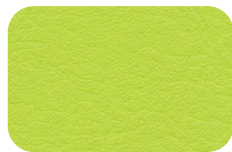


Find our products on the NHS Supply Chain Catalogue

## 14 Standard Colours



BEIGE



CITRUS GREEN



APPLE MINT



CANDY



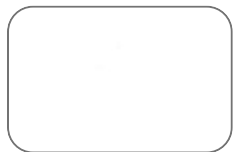
RASPBERRY CRUSH



DAMSON



PILLAR BOX RED



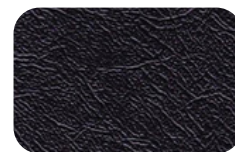
WHITE



ASH GREY



GUN METAL GREY



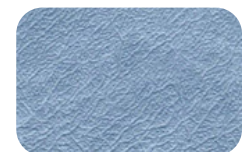
BLACK



DARK BLUE



MID BLUE



SKY BLUE