

---

**Medi Plinth**

[www.medi-plinth.co.uk](http://www.medi-plinth.co.uk)



# ASSISTED LIVING BROCHURE

Promoting comfort and care

---

# Hospital Furniture

# CONTENTS

---

|  |           |
|--|-----------|
| <b>PATIENT HOISTS</b> Rebotec Hoists         | <b>3</b>  |
| <b>HOSPITAL BED</b> Care Sure                | <b>6</b>  |
| <b>NURSING BEDS</b> Home Sure                | <b>9</b>  |
| <b>MATTRESSES</b> IQ Dynamic & Hybrid        | <b>13</b> |
| <b>PATIENT CHAIRS</b> Breeze Chairs          | <b>18</b> |
| <b>COMMODOES</b> Rebotec Commodes            | <b>22</b> |
| <b>SHOWER CHAIRS</b> Rebotec Chairs / Stools | <b>39</b> |
| <b>GRAB RAILS</b> Bathroom Accessories       | <b>43</b> |
| <b>WALKING AIDS</b> Rollators                | <b>45</b> |
| <b>WARD FURNITURE</b> Shuttleworth           | <b>47</b> |

---

## Patient Hoists

# 150 LIFTING HOIST



### Structure

Epoxy coated steel frame.

Complete lifting hoist can be assembled in just a few minutes.

Utilises electric lifting arm.



### Comfort

A range of comfortable slings are available to fit patient requirements.

Ergonomic handles.



### Ease Of Handling

Wired remote control for user controls in any position around the lift.

Capable of lowering patient to the ground.

The base frame has a very low construction to allow for very good under-ride possibilities.

Undercarriage is expandable as needed by means of foot pedal.

Mounted on four swivelling castors for portability. Each rear castor is braked.



### Safety

Features easy to access emergency stop button.

Lift can allow for emergency mechanical lowering if required.

Additional battery backup.

Medical grade electric lifting arm.

## Patient Hoists

# 150 SIT-STAND LIFT



### Structure

Epoxy coated steel frame.

Complete lifting hoist can be assembled in just a few minutes.

Utilises electric lifting arm.



### Comfort

Calf straps (shown) can be added to improve patient stability and comfort when lifting.

180° grab handles support patient.

Angled foot rests secure feet in place when in use.



### Ease Of Handling

Wired remote control for user controls in any position around the lift.

The base frame has a very low construction to allow for very good under-ride possibilities.

Undercarriage is expandable as needed by means of foot pedal.

Mounted on four swivelling castors for portability. Each rear castor is braked.



### Safety

Features easy to access emergency stop button.

Lift can allow for emergency mechanical lowering if required.

Additional battery backup.

Medical grade electric lifting arm.



## Specifications

# 150 PATIENT HOISTS

### Lifting Hoist: ARNOLD 150

Lifting hoist: 320.00.10

|                    |        |
|--------------------|--------|
| Lift height (min.) | 55 cm  |
| Lift height (max.) | 174 cm |
| Underpin height    | 14 cm  |
| Device weight      | 43 kg  |
| Max. user weight   | 150 kg |

### Sit-Stand Hoist: JAMES 150

Sit to stand hoist: 320.02.10

|                    |        |
|--------------------|--------|
| Lift height (min.) | 84 cm  |
| Lift height (max.) | 150 cm |
| Underpin height    | 14 cm  |
| Device weight      | 53 kg  |
| Max. user weight   | 150 kg |

# Hospital Bed

## CARE SURE



### Structure

Epoxy coated steel tube frame.

Head and foot board ensure mattress retention, preventing displacement. Mattress platform is easily removable without the need for tools.

Complete with supports for accessories (IV drip rod, lifting pole, etc.) on each corner of the bed.

Scissor-lift system provides optimum stability and supports weights of up to 250 kg.

100% usable patient surface.



### Safety

Emergency release of backrest for quick lowering of the section in the event of an emergency, battery or power failure (CPR Position).

Double LED safety positioning light (green indicates bed is below minimum height, red shows bed has exceeded minimum safety height).

Anti-trapping sensor with automatic engine stop when detecting an obstacle.

Medical grade electric motors with integrated anti-collapse safety measures.

IPX6 protection against water and dust ingress.

Conforms to Regulation (EU) 2017/745.



### Comfort

Four independent HDPE side rails that comply with EN 60601-2-52 standards. Each include gas spring dampers to allow for single-hand operation.

Siderails use an innovative mechanism allowing them to fold closely to the bed frame (no more than 7.5 cm). Each has an integrated angle indicator.

'Help to stand up' button. Aids safe patient transfer with control of bed positioning.

Automatic positioning system to allows lowering of the back section (by 15 cm) and leg regression (by 7 cm) for protection against bedsores.

Integrated pull-out linen shelf, providing linen storage whilst changing bed linen.

Automatic alarm sounds when bed backrest is positioned at 30°.

# Hospital Bed

## CARE SURE



### Controls

#### Clinician handset (outside of rail)

Panel for medical staff, allows activation/override of the different functions of the bed. Incorporates pre-programmed functions (Trendelenburg, CPR shock position, emergency Trendelenburg, cardiac chair and exam position).

#### Patient handset (inside of rail)

Allows patients to control and position the sections of the backrest, back/foot and height, activation of the "GO" button and the night light under the bed. It has pre-programmed functions such as patient exit button and sitting position.

#### Nurse handset (external)

Allows medical staff to work efficiently and control the bed from different locations. Includes practical default functions and activation of security alarm.

Allows activation/override of the bed adjustment functions, individually or synchronously, using the "STOP" button.

Incorporates pre-programmed functions (cardiac chair, CPR, exam position etc.)



### Ease Of Handling

Controlled by in-built software that ensures smoothed and synchronized movements and positioning of bed sections.

Controls include pictograms for ease of use regardless of spoken language.

Foot pedal controls height adjustment, accessible from both sides of the chair.

Centralised braking system and steering facility.

Medical grade double wheel anti-static castors Ø 150 mm allows better manoeuvrability and stability when subjected to heavy loads.



### Positioning

Foot section includes electrically controlled knee-break allowing for five positions.

The cardiac chair position is critical for patients with heart and breathing problems, helping to enhance their recovery. This feature is activated simply by pressing a lever.

Exit position button, reduces height and feet section to lowest position, whilst back is elevated to 67° allowing for easy transfer.

# Specifications

## CARE SURE BED

### Hospital Bed: CARE SURE

|                         |             |
|-------------------------|-------------|
| External dimensions     | 223 x 98 cm |
| Patient surface         | 200 x 85 cm |
| Height adjustment       | 39–77 cm    |
| Backrest tilting        | 67°         |
| Legrest tilting         | 28°         |
| Footrest tilting        | 19°         |
| Trendelenburg/Reverse   | ±16°        |
| Backrest autoregression | 15 cm       |
| Footrest autoregression | 7 cm        |
| Maximum working load    | 250 kg      |
| Weight w/o accessories  | 150 kg      |



### Electric features:

|                           |                    |
|---------------------------|--------------------|
| Power supply              | 110-240V / 50-60Hz |
| Maximum current intake    | 5A, 100-240V       |
| Protection indicator      | IP66               |
| Protection class          | Class I            |
| Electric shock protection | TYPE B             |



# Nursing Bed

## HOME SURE



### Structure

- Epoxy coated steel frame.
- Four easily detachable ABS sections
- Complete with supports for accessories (IV drip rod, lifting pole, etc.)
- Patient fixation support.
- Patient positioning supports weights of up to 230 kg.
- 100% usable patient surface.
- Clearance to allow use of patient lifting hoists.



### Safety

- Bed nightlight to help mitigate the risk of overnight falls
- Medical grade electric motors with integrated anti-trapping double stop safety system.
- IPX6 protection against water and dust ingress.
- Conforms to Regulation (EU) 2017/745.



### Comfort

- Patient handset with function cancellation, includes options to place the bed into cardiac chair position.
- Foot section is independent of the knee section to provide more ergonomic positioning.
- Anti-decubitus system, with double regression of the back section 11 cm and 7 cm of the leg section.



### Ease Of Handling

- Height adjustable 19–68cm to allow for optimum working height for care staff duties and low-entry point for transfers.
- Very low entry height of 19cm facilitating easy patient transfer and positioning including CPR, Cardiac Chair Position, Trendelenburg and Fowler.
- Central brake: rubber wheels with retractable system



# Specifications

## HOME SURE BED

### Nursing Bed: HOME SURE

|                        |              |
|------------------------|--------------|
| External dimensions    | 206 x 104 cm |
| Patient surface        | 200 x 86 cm  |
| Height adjustment      | 19–68 cm     |
| Backrest tilting       | 70°          |
| Legrest tilting        | 30°          |
| Trendelenburg/Reverse  | ±16°         |
| Backrest regression    | 11 cm        |
| Legrest regression     | 7 cm         |
| Maximum working load   | 230 kg       |
| Weight w/o accessories | 150 kg       |

#### Electric features:

|                           |                    |
|---------------------------|--------------------|
| Power supply              | 110-240V / 50-60Hz |
| Maximum current intake    | 1.6A, 370 Volt     |
| Protection indicator      | IP66               |
| Protection class          | Class I            |
| Electric shock protection | TYPE B             |



# Nursing Bed

## HOME SURE PRO



### Structure

Steel frame with electro-static coating with epoxy finish and antibacterial and anticorrosive treatment.

Curved headboard and footboard manufactured from steamed solid beech wood.

Complete with supports for accessories (IV drip rod, lifting pole, etc.)

Folding side rails with safety system.

Patient positioning supports weights of up to 230 kg.

100% usable patient surface.

Clearance to allow use of patient lifting hoists.



### Safety

Safety positioning LEDs: illuminate green if the bed is in the lowest position. If the bed is raised from the lowest position, the light will illuminate orange.

Side rails with automatic locking system

Medical grade electric motors with integrated anti-trapping double stop safety system.

IP54 protection against water and dust.

Conforms to Regulation (EU) 2017/745.



### Comfort

Nurse handset with function cancellation, includes options to place the bed into cardiac chair position.

Two support points in bed base allow the load to be distributed evenly for optimal lateral stability.

Includes software that synchronizes bed movements for comfortable positioning.

Anti-decubitus system, with regression of the back section to 15 cm.



### Ease Of Handling

Height adjustable 19–80cm to allow for extra high working height for care staff duties and low-entry point for transfers.

Very low entry height of 19cm facilitating easy patient transfer and positioning including CPR, Cardiac Chair Position, Trendelenburg and Fowler.

Double control pedal located at the front and rear of the bed to engage full brake, neutral and freewheeling.

Rechargeable lithium battery with 200 cycles of uninterrupted use.

Central brake: rubber wheels with retractable system

# Specifications

## HOME SURE PRO BED

### Nursing Bed: HOME SURE PRO

|                        |              |
|------------------------|--------------|
| External dimensions    | 206 x 101 cm |
| Patient surface        | 200 x 90 cm  |
| Height adjustment      | 19–80 cm     |
| Backrest tilting       | 65°          |
| Legrest tilting        | 45°          |
| Trendelenburg/Reverse  | ±15°         |
| Backrest regression    | 15 cm        |
| Maximum working load   | 230 kg       |
| Weight w/o accessories | 150 kg       |

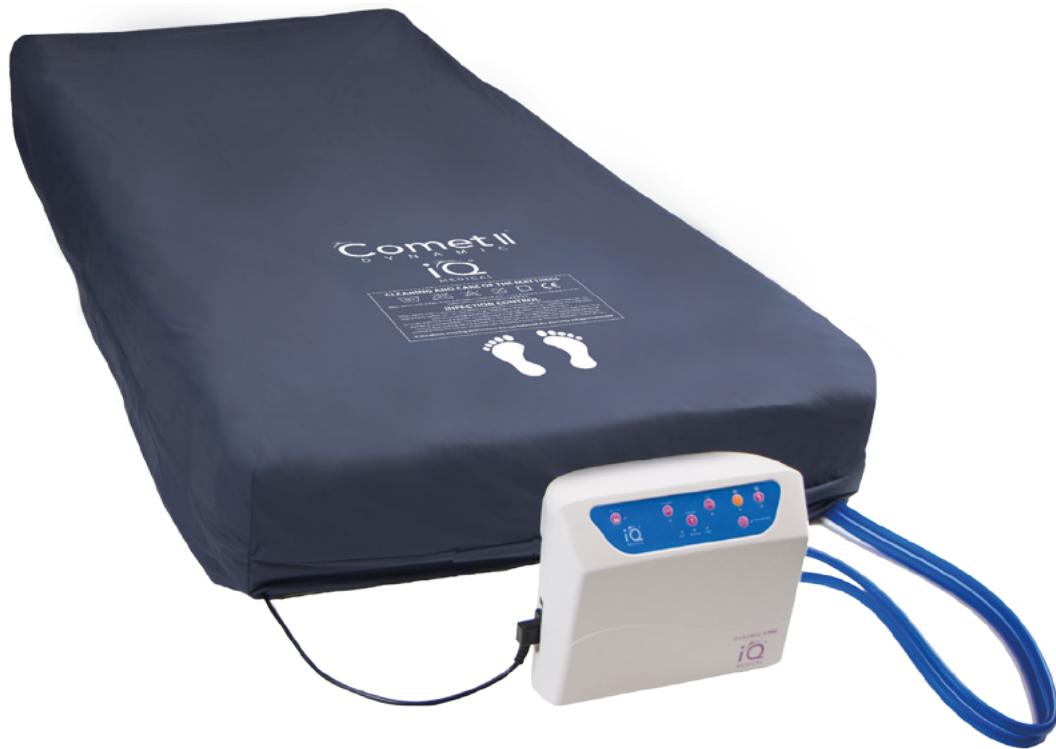
### Electric features:

|                           |                    |
|---------------------------|--------------------|
| Power supply              | 110-240V / 50-60Hz |
| Maximum current intake    | 1.6A, 370 Volt     |
| Protection indicator      | IP 54              |
| Protection class          | Class II           |
| Electric shock protection | TYPE B             |



## Mattresses

# COMET II DYNAMIC MATTRESS



### *i* Features & Benefits

A dynamic mattress replacement system combining two therapies dynamic and continuous low pressure. Both therapies provide pressure redistribution. Suitable to be used in both the acute and community environment.

- Alternating or continuous low pressure designed to suit both patient and clinical preference
- For the prevention and treatment of patients up to very high risk and/or have existing tissue damage up to category IV.
- Dual Compressor allows for rapid mattress inflation and quick patient placement
- Intelligent Pressure Monitoring ensures pressures adjust according to the individual patient
- Ceramic Components improves performance, reliability and reduced need for maintenance
- Automatic power unit for ease of use, simplifying set up, minimising user error and training time
- Alarms and troubleshooting guide allows issues to be rectified quickly and easily
- Reliable, high-quality manufacture with comprehensive warranty provide cost savings and reduced down time
- A wealth of supporting clinical evidence including Multi-Site Evaluations and Published Studies

### Dynamic Mattress: COMET II

|                        |         |
|------------------------|---------|
| Max Patient Weight     | 200 kg  |
| Cells                  | 19      |
| Foam Underlay          | No      |
| Width                  | 900 mm  |
| Length                 | 2000 mm |
| Depth                  | 210 mm  |
| Cable Management       | Yes     |
| Ease Of Transport Mode | Yes     |
| Easy Release CPR       | Yes     |
| Product Weight         | 7 kg    |
| Manufacturer Warranty  | 3 Years |

## Mattresses

# CORE II HYBRID FOC MATTRESS



### *i* Features & Benefits

A dynamic alternating mattress replacement system combining high specification Static foam technology layered over powered, alternating air cells.

Can be used in two modes, static mode (without the need for a power unit) or dynamic alternating mode by simply adding the power unit as needed.

- Two modes: non-powered and powered enabling caregivers to step patients up and down without the need to transfer onto an alternative surface.
- Whisper quiet power unit minimising disruption
- Automatic power unit for ease of use, simplifying set up, minimising user error and training time
- Three foam sections for head, body and heels, for maximum pressure re-distribution ,comfortable and stable support surface for the patient
- Flexi-foam edges for ease of use on profiling beds
- Easy to clean and decontaminate
- Troubleshooting guide on power unit enabling caregivers to rectify issues quickly and easily
- Reliable, high-quality manufacture with comprehensive warranty provide cost savings and reduced down time
- Multi-Site Evaluations and Published Studies

### Dynamic Mattress: CORE II

|                          |                     |
|--------------------------|---------------------|
| Max patient weight       | 250 kg              |
| Cells                    | 10                  |
| Cell cycle               | 1 In 2 (10 Minutes) |
| Type                     | Foam Over Cell      |
| Width                    | 900 mm              |
| Length                   | 2000 mm             |
| Depth                    | 210 mm              |
| Fault Alarm              | Yes                 |
| Power Failure Alarm      | Yes                 |
| Emergency Deflation      | Yes                 |
| Weight (with power unit) | 15.7 kg             |
| Manufacturer warranty    | 3 Years             |



## Mattresses

# STAR II DYNAMIC MATTRESS



### *i* Features & Benefits

A dynamic mattress replacement system combining two therapies dynamic and continuous low pressure. Both therapies provide pressure redistribution promoting both immersion and envelopment of the patient into the surface minimising high peak pressures under vulnerable areas of the skin.

- Alternating or continuous low pressure designed to suit both patient and clinical preference
- For the prevention and treatment of patients up to very high risk and/or have existing tissue damage up to category IV.
- Dual Compressor allows for rapid mattress inflation and quick patient placement
- Intelligent Pressure Monitoring ensures pressures adjust according to the individual patient
- Ceramic Components improves performance, reliability and reduced need for maintenance
- Automatic power unit for ease of use, simplifying set up, minimising user error and training time
- Easy wipe base sheet and straps
- Alarms and troubleshooting guide allows issues to be rectified quickly and easily
- Reliable, high-quality manufacture with comprehensive warranty provide cost savings and reduced down time

### Dynamic Mattress: STAR II

|                        |         |
|------------------------|---------|
| Max Patient Weight     | 200 kg  |
| Cells                  | 19      |
| Foam Underlay          | Yes     |
| Width                  | 900 mm  |
| Length                 | 2000 mm |
| Depth                  | 210 mm  |
| Cable Management       | Yes     |
| Ease Of Transport Mode | Yes     |
| Easy Release CPR       | Yes     |
| Product Weight         | 9 kg    |
| Manufacturer Warranty  | 3 Years |

# Mattresses

# STAR II PLUS BARIATRIC MATTRESS



## *i* Features & Benefits

A dynamic mattress replacement system designed for the plus-size patient, combining two therapies dynamic and continuous low pressure. Both therapies provide pressure redistribution

Promoting both immersion and envelopment of the patient into the surface minimising high peak pressures under vulnerable areas of the skin.

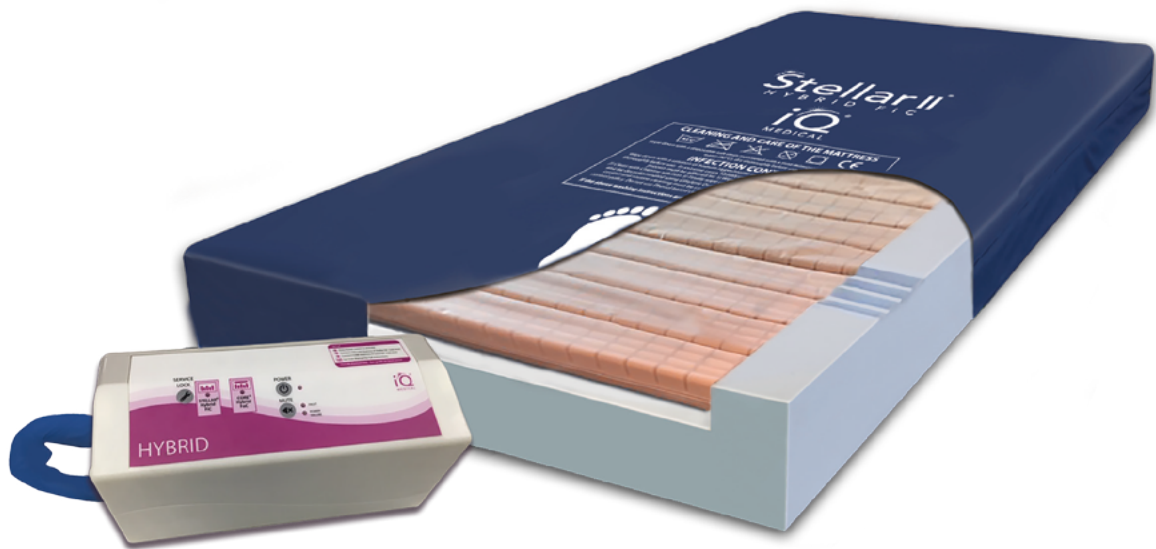
- Alternating or continuous low pressure designed to suit both patient and clinical preference
- For the prevention and treatment of patients up to very high risk and/or have existing tissue damage up to category IV.
- Dual Compressor allows for rapid mattress inflation and quick patient placement
- Intelligent Pressure Monitoring ensures pressures adjust according to the individual patient
- Ceramic Components improves performance, reliability and reduced need for maintenance
- Automatic power unit for ease of use, simplifying set up, minimising user error and training time
- Easy wipe base sheet and straps
- Alarms and troubleshooting guide allows issues to be rectified quickly and easily
- Reliable, high-quality manufacture with comprehensive warranty included.

## Dynamic Mattress: STAR II PLUS

|                        |         |
|------------------------|---------|
| Max Patient Weight     | 350 kg  |
| Cells                  | 19      |
| Foam Underlay          | Yes     |
| Width                  | 1200 mm |
| Length                 | 2000 mm |
| Depth                  | 210 mm  |
| Cable Management       | Yes     |
| Ease Of Transport Mode | Yes     |
| Easy Release CPR       | Yes     |
| Product Weight         | 15 kg   |
| Manufacturer Warranty  | 3 Years |

## Mattresses

# STELLAR II HYBRID FIC MATTRESS



### **i** Features & Benefits

A dynamic alternating mattress replacement system combining high specification foam technology integrated inside dynamic alternating air cells.

Can be used in two modes, static mode (without the need for a power unit) or dynamic alternating mode by simply adding the power unit as needed.

- Two modes: non-powered and powered enabling caregivers to step patients up and down without the need to transfer onto an alternative surface.
- Whisper quiet power unit minimising disruption
- Automatic power unit for ease of use, simplifying set up, minimising user error and training time
- Three foam sections for head, body and heels, for maximum pressure re-distribution, comfortable and stable support surface for the patient
- Flexi-foam edges for ease of use on profiling beds
- Easy to clean and decontaminate
- Troubleshooting guide on power unit enabling caregivers to rectify issues quickly and easily
- Reliable, high-quality manufacture with comprehensive warranty provide cost savings and reduced down time

### Dynamic Mattress: STELLAR II

|                       |                     |
|-----------------------|---------------------|
| Max patient weight    | 250 kg              |
| Cells                 | 14                  |
| Cell cycle            | 1 In 2 (10 Minutes) |
| Type                  | Foam In Cell        |
| Width                 | 900 mm              |
| Length                | 2000 mm             |
| Depth                 | 210 mm              |
| Fault Alarm           | Yes                 |
| Power Failure Alarm   | Yes                 |
| Emergency Deflation   | Yes                 |
| Product weight        | 15.7 kg             |
| Manufacturer warranty | 3 Years             |

## Patient Chairs

# BREEZE 2 & 4 WHEEL



### Structure

Constructed with an epoxy-coated steel tube frame for secure platform.

Handle for an easy transport (optional in 2 wheels model, and included in 4 wheels model).

IV pole socket and hooks for urine bags.



### Easy Cleaning

Manufactured from high quality materials, guaranteeing their long life and endurance.

Upholstered in self-extinguishing vinyl fabric (according to M2 standard, EN1021.1-2) antibacterial and resistant to absorption and stains, easy cleaning and maintenance.



### Comfort

High anatomical backrest, padded in high density injected and cold moulded polyurethane foam, designed for optimum comfort and ergonomic adjustment.

Height-adjustable padded headrest cushion, removable, for maximum comfort.

Polyurethane armrests are adjustable in height in five different positions by means of an integrated button.



### Ease Of Handling

Independent adjustment of backrest and legrest, by means of gas spring with "Bloc-o-Lift" system. Allows fixing the backrest in multiple positions to guarantee a better patient rest and comfort.

Backrest tilting system and ergonomic design combined with seat movement keeps the patient suspended in "zero gravity" avoiding pressures in the lower back, pelvis and legs.

Includes castors for improved manoeuvrability. (Four Ø100 mm braked or two Ø50 mm braked).

## Patient Chairs

# BREEZE PLUS



### Structure

Constructed with an epoxy-coated steel tube frame for secure platform.

Handle included for an easy transport.

IV pole socket and hooks for urine bags.

Footrest attached under-seat.



### Easy Cleaning

Manufactured from high quality materials, guaranteeing their long life and endurance.

Upholstered in self-extinguishing vinyl fabric (according to M2 standard, EN1021.1-2) antibacterial and resistant to absorption and stains, easy cleaning and maintenance.



### Comfort

High anatomical backrest, padded in high density injected and cold moulded polyurethane foam, designed for optimum comfort and ergonomic adjustment.

Height-adjustable padded headrest cushion, removable, for maximum comfort.

Polyurethane armrests are adjustable in height in five different positions by means of an integrated button.

Integrated footrest for added patient comfort.



### Ease Of Handling

Independent adjustment of backrest and legrest, by means of gas spring with "Bloc-o-Lift" system. Allows fixing the backrest in multiple positions to guarantee a better patient rest and comfort.

Includes four Ø 100 mm castors with a central locking system for quick, secure braking.

Backrest tilting system and ergonomic design combined with seat movement keeps the patient suspended in "zero gravity" avoiding pressures in the lower back, pelvis and legs.



## Patient Chairs

# BREEZE ELEVATE



### Structure

- Epoxy-coated steel tube frame.
- Ergonomic handle for easy transport.
- Sockets for IV pole available (upon request).
- Footrest attached under-seat.



### Comfort

- High anatomical backrest, padded in high density injected and cold moulded polyurethane foam, designed for optimum comfort and ergonomic adjustment.
- Contoured front to the backrest stimulates blood circulation.
- Seat angled towards the backrest to secure patient in position
- Height-adjustable padded headrest cushion, removable, for maximum comfort.
- Polyurethane armrests are adjustable in height in five different positions by means of an integrated button.
- Integrated footrest for added patient comfort.



### Easy Cleaning

- Manufactured from high quality materials, guaranteeing their long life and endurance.
- Upholstered in self-extinguishing vinyl fabric (according to M2 standard. EN1021.1-2) antibacterial and resistant to absorption and stains, easy cleaning and maintenance.



### Ease Of Handling

- Hydraulic height adjustment by foot pedal, accessible from both sides of the chair.
- Includes four Ø 75 mm castors with a central locking system for quick, secure braking.
- Backrest tilting system and ergonomic design combined with seat movement keeps the patient suspended in "zero gravity" avoiding pressures in the lower back, pelvis and legs.
- Accessible for lifts/hoists from front section and suitable for overbed tables.

## Specifications

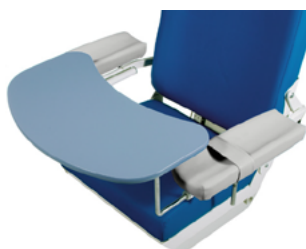
# BREEZE (2&4), BREEZE PLUS & BREEZE ELEVATE

### Patient Chair: BREEZE (2&4 WHEEL), PLUS

|                         |                   |
|-------------------------|-------------------|
| Overall dimensions (2w) | 122.5 x 72 x 81cm |
| Overall dimensions (4w) | 122.5 x 72 x 86cm |
| Extended length         | 165cm             |
| Back section dimensions | 84 x 51cm         |
| Seat dimensions         | 52 x 52 x 46cm    |
| Leg section dimensions  | 51 x 34cm         |
| Footrest dimensions     | 29-35 x 22cm      |
| Backrest tilting        | 85–168°           |
| Arm rests dimensions    | 70 x 49cm         |
| Weight w/o accessories  | 45kg              |
| Safe working load       | 180kg             |

### Patient Chair: BREEZE ELEVATE

|                         |                   |
|-------------------------|-------------------|
| Overall dimensions      | 141 x 73.5 x 80cm |
| Extended length         | 163cm             |
| Back section dimensions | 84 x 51cm         |
| Seat dimensions         | 51 x 54 x 54–80cm |
| Leg section dimensions  | 51 x 34cm         |
| Backrest tilting        | 85–168°           |
| Height range            | 540–80cm          |
| Extending footrest      | 29-35 x 22cm      |
| Arm rests dimensions    | 70 x 49cm         |
| Weight w/o accessories  | 45kg              |
| Safe working load       | 180kg             |



## Commodes

# CLASSIC COMMODES



### Structure

Utilises a completely synthetic frame making it durable and lightweight. Coated tube frame design allows for a very high resistance to wear.

Strong, rigid materials also have the added benefit of shock dissipation.

Includes a moulded removable potty as standard (stainless steel rack also available).



### Comfort

Moulded backrest is ergonomically designed to be comfortable for users.

Available as fixed or adjustable height. Offering adjustable height or increased width to accommodate patients of different sizes.

Footrests are height adjustable and swing away when not required.

Moulded synthetic rubber over-seat which securely encloses the aperture and is kind to patient skin.



### Ease Of Handling

Push handle integrated in back frame for easy and accurate portering of mobile models)

Fitted with four Ø 125mm braked castors or static rubber feet.

Arm rests which are easily retractable to enable secure transfer and patient access.

Rubber over-seat has no seams and will not rip/ tear.



### Easy Cleaning

Chair can be dismantled within 20 seconds without tools to allow for thorough cleaning.

Designed without welding to avoid rust or micro-fracture weak points. Seamless joints ensure dirt or bodily fluids cannot be trapped.

Capable of withstanding the most rigorous cleaning regime. Suitable for cleaning with NHS approved cleaning solutions and Clinell wipes (or other alcohol based wipes).

## Specifications

# CLASSIC COMMODES

### Commode: FIXED HEIGHT

**Bonn** – Mobile fixed height: **343.54.00**

**Koln** – Static fixed height: **340.54.00**

|                         |                  |
|-------------------------|------------------|
| Overall dimensions      | 102 x 57 x 60 cm |
| Aperture seat height    | 51 cm            |
| Under aperture height   | 49 cm            |
| Over-seat height        | 53 cm            |
| Seat width              | 47 cm            |
| Seat depth              | 40 cm            |
| Armrest height          | 26 cm            |
| Backrest height         | 52 cm            |
| Clears toilet of height | 49 cm            |
| Safe working load       | 130 kg           |
| Product weight          | 15 kg            |

### Commode: ADJUSTABLE HEIGHT

**Hamburg** – Mobile adjustable height: **356.54.00**

**Kiel** – Static adjustable height: **347.54.00**

Identical dimensions with adjustable height:

|                         |            |
|-------------------------|------------|
| Height                  | 101–107 cm |
| Aperture seat height    | 48–53 cm   |
| Clears toilet of height | 47–520 cm  |

### Commode: WIDE MODEL

**Boston** – Mobile wide commode: **342.54.00**

A wider design with larger safe working load:

|                    |                  |
|--------------------|------------------|
| Overall dimensions | 102 x 62 x 60 cm |
| Seat width         | 52 cm            |
| Seat depth         | 45 cm            |
| Safe working load  | 150 kg           |
| Product weight     | 16 kg            |

## Commodes

# PROPELLED COMMODES



Bremen



Venedig



### Structure

Utilises a completely synthetic frame making it durable and lightweight. Coated tube frame design allows for a very high resistance to wear.

Strong, rigid materials also have the added benefit of shock dissipation.

Self or attendant propelled design.

Includes a moulded removable potty as standard (stainless steel rack also available).



### Comfort

Moulded backrest is ergonomically designed to be comfortable for users.

Footrests are height adjustable and swing away when not required.

Moulded synthetic rubber over-seat which securely encloses the aperture and is kind to patient skin.



### Ease Of Handling

Push handle integrated in back frame for easy and accurate portering of mobile models).

Fitted with four Ø 125mm braked castors or 24-inch self-propelled wheels with grip.

Arm rests which are easily retractable to enable secure transfer and patient access.

Rubber over-seat has no seams and will not rip/ tear.



### Easy Cleaning

Chair can be dismantled within 20 seconds without tools to allow for thorough cleaning.

Designed without welding to avoid rust or micro-fracture weak points. Seamless joints ensure dirt or bodily fluids cannot be trapped.

Capable of withstanding the most rigorous cleaning regime. Suitable for cleaning with NHS approved cleaning solutions and Clinell wipes (or other alcohol based wipes).



# Specifications

## PROPELLED COMMODES

**Commode: SELF PROPELLED**

Venedig – Propelled Commode: 380.54.10

|                           |         |
|---------------------------|---------|
| Width                     | 67 cm   |
| Depth                     | 97 cm   |
| Seat width                | 42 cm   |
| Seat depth                | 44 cm   |
| Seat height               | 55 cm   |
| Max. toilet width         | 33 cm   |
| Toilet height with bucket | 43 cm   |
| Castor Wheels             | 12.5 cm |
| Weight                    | 23.4 kg |
| Safe working load         | 100 kg  |

**Commode: ATTENDANT PROPELLED**

Bremen – Propelled Commode: 357.54.10

|                           |         |
|---------------------------|---------|
| Width                     | 52 cm   |
| Depth                     | 95 cm   |
| Seat width                | 42 cm   |
| Seat depth                | 44 cm   |
| Seat height               | 52 cm   |
| Max. toilet width         | 33 cm   |
| Toilet height with bucket | 40 cm   |
| Castor Wheels             | 10 cm   |
| Weight                    | 16.4 kg |
| Safe working load         | 90 kg   |

## Commodes

# CHILD COMMODES



Augustburg SP



Augustburg AP



### Structure

Utilises a completely synthetic frame making it durable and lightweight. Coated tube frame design allows for a very high resistance to wear.

Youthful, coloured design is appealing to younger users.

Strong, rigid materials also have the added benefit of shock dissipation.

Includes a moulded removable potty as standard (stainless steel rack also available).



### Comfort

Moulded backrest is ergonomically designed to be comfortable for users.

Footrests are easily adjustable via their collars to fit a range of ages and swing away when not required.

Moulded synthetic rubber over-seat which securely encloses the aperture and is kind to patient skin.



### Ease Of Handling

Push handle integrated in back frame for easy and accurate portering of mobile models)

Fitted with four Ø 125mm braked castors or 24-inch self-propelled wheels with grip.

Arm rests which are easily retractable to enable secure transfer and patient access.

Rubber over-seat has no seams and will not rip/ tear.



### Easy Cleaning

Chair can be dismantled within 20 seconds without tools to allow for thorough cleaning.

Designed without welding to avoid rust or micro-fracture weak points. Seamless joints ensure dirt or bodily fluids cannot be trapped.

Capable of withstanding the most rigorous cleaning regime. Suitable for cleaning with NHS approved cleaning solutions and Clinell wipes (or other alcohol based wipes).

## Specifications

# CHILD COMMODES

### Child Commode: SELF PROPELLED

Augustsburg SP – Colourful commode: 339.24.97

|                          |         |
|--------------------------|---------|
| Depth                    | 87 cm   |
| Width                    | 53 cm   |
| Seat depth               | 35 cm   |
| Seat height              | 54 cm   |
| Seat width               | 40 cm   |
| Weight                   | 17.3 kg |
| Toilet height with rails | 40 cm   |
| Toilet height w/o rails  | 43 cm   |
| Toilet width             | 33 cm   |
| Safe working load        | 80 kg   |

### Child Commode: ATTENDANT PROPELLED

Augustsburg AP – Colourful commode: 339.04.97

|                          |         |
|--------------------------|---------|
| Depth                    | 97 cm   |
| Width                    | 66 cm   |
| Seat depth               | 35 cm   |
| Seat height              | 55 cm   |
| Seat width               | 40 cm   |
| Weight                   | 24.9 kg |
| Toilet height with rails | 44 cm   |
| Toilet width             | 32 cm   |
| Safe working load        | 80 kg   |

## Commodes

# BARIATRIC COMMODES



### Structure

Utilises a completely synthetic frame making it durable and lightweight. Coated tube frame design allows for a very high resistance to wear.

Strong, rigid materials also have the added benefit of shock dissipation.

Heavy-duty backrest with aluminium construction to secure patient.

Available in two widths to suit user size.

Includes a device with bucket.



### Comfort

Moulded back section features contoured rubber backrest for optimum patient comfort.

Wider seat is designed to accommodate larger patients.

The foot rests are height adjustable and swing away when not required.

Moulded synthetic rubber over-seat which securely encloses the aperture and is kind to patient skin.



### Ease Of Handling

Arched rear frame section acts as ergonomic push handle and allows for easy and accurate portering.

Fitted with four Ø 125mm braked castors.

Arm rests which are easily retractable to enable secure transfer and patient access.

Rubber over-seat has no seams and will not rip/ tear.



### Easy Cleaning

Chair can be dismantled within 20 seconds without tools to allow for thorough cleaning.

Designed without welding to avoid rust or micro-fracture weak points. Seamless joints ensure dirt or bodily fluids cannot be trapped. Seamless joints ensure dirt or bodily fluids cannot be trapped.

Capable of withstanding the most rigorous cleaning regime. Suitable for cleaning with NHS approved cleaning solutions and Clinell wipes (or other alcohol based wipes).

## Specifications

# BARIATRIC COMMODES

### Commode: WIDE

**Dallas** – Wide bariatric commode: **359.54.00**

|                           |        |
|---------------------------|--------|
| Depth                     | 74 cm  |
| Width                     | 90 cm  |
| Height to handle          | 104 cm |
| Seat height               | 56 cm  |
| Seat depth                | 48 cm  |
| Seat width                | 64 cm  |
| Toilet height with bucket | 44 cm  |
| Toilet height w/o bucket  | 47 cm  |
| Safe working load         | 200 kg |
| Product weight            | 22 kg  |

### Commode: STANDARD

**Chicago** – Standard bariatric commode: **358.54.00**

|                           |        |
|---------------------------|--------|
| Depth                     | 68 cm  |
| Width                     | 90 cm  |
| Height to handle          | 104 cm |
| Seat height               | 56 cm  |
| Seat depth                | 48 cm  |
| Seat width                | 64 cm  |
| Toilet height with bucket | 44 cm  |
| Toilet height w/o bucket  | 47 cm  |
| Safe working load         | 200 kg |
| Product weight            | 21 kg  |

## Commodes

# SHOWER COMMODES



New York



Frankfurt



### Structure

Utilises a completely synthetic frame making it durable and lightweight. Coated tube frame design allows for a very high resistance to wear.

Strong, rigid materials also have the added benefit of shock dissipation.

Heavy-duty backrest with aluminium construction to secure patient.

Includes a device with bucket.



### Comfort

Moulded backrest is ergonomically designed to be comfortable for users.

Wider seat is designed to accommodate larger patients.

The foot rests are height adjustable and swing away when not required.

Moulded synthetic rubber over-seat which securely encloses the aperture and is kind to patient skin.



### Ease Of Handling

Arched rear frame section acts as ergonomic push handle and allows for easy and accurate portering.

Fitted with 5-inch braked castors.

Arm rests which are easily retractable to enable secure transfer and patient access.

Rubber over-seat has no seams and will not rip/ tear.



### Easy Cleaning

Chair can be dismantled within 20 seconds without tools to allow for thorough cleaning.

Designed without welding to avoid rust or micro-fracture weak points. Seamless joints ensure dirt or bodily fluids cannot be trapped. Seamless joints ensure dirt or bodily fluids cannot be trapped.

Capable of withstanding the most rigorous cleaning regime. Suitable for cleaning with NHS approved cleaning solutions and Clinell wipes (or other alcohol based wipes).



## Specifications

# SHOWER COMMODES

### Shower Commode: STANDARD

Frankfurt – Adjustable height commode: 355.54.00

|                           |              |
|---------------------------|--------------|
| Depth                     | 87 cm        |
| Width                     | 56 cm        |
| Seat width                | 46 cm        |
| Seat depth                | 45 cm        |
| Seat height               | 56 – 61 cm   |
| Toilet height with bucket | 44 – 49 cm   |
| Toilet height w/o bucket  | 48 – 53 cm   |
| Castor Wheels             | 12.5 cm (5") |
| Weight                    | 18 kg        |
| Capacity                  | 130 kg       |

### Shower Commode: HEAVY DUTY

New York - Fixed height commode: 368.54.00

|                           |              |
|---------------------------|--------------|
| Depth                     | 89 cm        |
| Width                     | 62 cm        |
| Seat width                | 52 cm        |
| Seat depth                | 45 cm        |
| Seat height               | 55 cm        |
| Toilet height with bucket | 43 cm        |
| Toilet height w/o bucket  | 47 cm        |
| Castor Wheels             | 12.5 cm (5") |
| Weight                    | 16.6 kg      |
| Capacity                  | 150 kg       |

## Commodes

# SELF-PROPEL SHOWER COMMODES



### Structure

Utilises a completely synthetic frame making it durable and lightweight. Coated tube frame design allows for a very high resistance to wear.

Strong, rigid materials also have the added benefit of shock dissipation.

Self propelled design to be controlled by user.

Heavy-duty backrest with aluminium construction to secure patient.



### Comfort

Moulded backrest is ergonomically designed to be comfortable for users.

Wider seat is designed to accommodate larger patients.

The foot rests are height adjustable and swing away when not required.

Moulded synthetic rubber over-seat which securely encloses the aperture and is kind to patient skin.



### Ease Of Handling

Arched rear frame section acts as ergonomic push handle and allows for easy and accurate portering.

Fitted with 24-inch self-propelled wheels with grip.

Arm rests which are easily retractable to enable secure transfer and patient access.

Rubber over-seat has no seams and will not rip/ tear.



### Easy Cleaning

Chair can be dismantled within 20 seconds without tools to allow for thorough cleaning.

Designed without welding to avoid rust or micro-fracture weak points. Seamless joints ensure dirt or bodily fluids cannot be trapped. Seamless joints ensure dirt or bodily fluids cannot be trapped.

Capable of withstanding the most rigorous cleaning regime. Suitable for cleaning with NHS approved cleaning solutions and Clinell wipes (or other alcohol based wipes).

Specifications

SELF-PROPEL SHOWER COMMODES

Shower Commode: STANDARD

Genf – 130kg commode: 346.54.10

|                           |        |
|---------------------------|--------|
| Depth                     | 95 cm  |
| Width                     | 71 cm  |
| Seat height               | 55 cm  |
| Seat depth                | 45 cm  |
| Seat width                | 46 cm  |
| Toilet height with bucket | 43 cm  |
| Max. toilet width         | 38 cm  |
| Safe working load         | 130 kg |
| Product weight            | 24 kg  |

Shower Commode: HEAVY-DUTY

Miami – 150kg commode: 345.54.10

|                           |        |
|---------------------------|--------|
| Depth                     | 95 cm  |
| Width                     | 77 cm  |
| Seat height               | 55 cm  |
| Seat depth                | 45 cm  |
| Seat width                | 52 cm  |
| Toilet height with bucket | 43 cm  |
| Safe working load         | 150 kg |
| Product weight            | 27 kg  |

## Commodes

# TILTING SHOWER COMMODES



### Structure

Utilises a completely synthetic frame making it durable and lightweight. Coated tube frame design allows for a very high resistance to wear.

Strong, rigid materials also have the added benefit of shock dissipation.

Available with electric or hydraulic lift mechanism or as fixed height model.

Chair frame extends to recline seat and backrest.

Also includes a device with bucket.



### Comfort

Comfortable, adjustable head rest which combined with the tilting function allows for endless positions with this versatile chair.

Sturdy, contoured back, head and leg supports have been ergonomically designed for optimum patient comfort.

The foot rests are height adjustable and swing away when not required.

Moulded synthetic rubber over-seat which sits over the aperture securely and is kind to patient skin.



### Ease Of Handling

Easy to use level mechanism allows fine adjustment of the chair back rest angle.

A push handle is integrated for easy and accurate portering.

Headrest tilt and height are adjusted with simple to use clip mechanisms.

Fitted with four Ø 125mm braked castors.

Arm rests which are easily retractable to enable secure transfer and patient access.

Rubber over-seat has no seams and will not rip/tear.



### Easy Cleaning

Chair can be dismantled within 20 seconds without tools to allow for thorough cleaning.

Designed without welding to avoid rust or micro-fracture weak points. Seamless joints ensure dirt or bodily fluids cannot be trapped. Seamless joints ensure dirt or bodily fluids cannot be trapped.

Capable of withstanding the most rigorous cleaning regime. Suitable for cleaning with NHS approved cleaning solutions and Clinell wipes (or other alcohol based wipes).

# Specifications

## TILTING SHOWER COMMODES

**Commode: PHOENIX SHOWER COMMODES**

Hydraulic lifting: **351.54.10**  
Electric lifting: **352.54.10**  
Fixed height 150kg capacity: **350.54.10**  
Fixed height 200kg capacity: **353.54.12**

|                         |                   |
|-------------------------|-------------------|
| Overall dimensions      | 120 x 111 x 65 cm |
| Seat width              | 54 cm             |
| Seat depth              | 43 cm             |
| Length when extended    | 144cm             |
| Armrest height          | 76 cm             |
| Push handle height      | 104 cm            |
| Backrest tilt from seat | 103°–128°         |
| Headrest Adjustment     | ± 12 cm           |
| Headrest Rotation       | 360°              |
| Safe working load       | 150 kg / 200 kg   |
| Product weight          | 29 kg             |



\*Commode belt is an optional extra and not included as standard.

## Commodes

# TRANSFER COMMODES



Bonn



### Structure

Utilises a completely synthetic frame making it durable and lightweight. Coated tube frame design allows for a very high resistance to wear.

Strong, rigid materials also have the added benefit of shock dissipation.

Compact design for space-saving benefits.

Includes a moulded removable potty as standard (stainless steel rack also available).



### Comfort

Moulded backrest is ergonomically designed to be comfortable for users.

Footrests are height adjustable and swing away when not required.

Seat pad is contoured for patient comfort and features a rear drainage channel for water run-off.



### Ease Of Handling

Push handle integrated in back frame for easy and accurate portering.

Fitted with four Ø 125mm braked castors.

Arm rests which are easily retractable to enable secure transfer and patient access.

Rubber over-seat has no seams and will not rip/ tear.



### Easy Cleaning

Chair can be dismantled within 20 seconds without tools to allow for thorough cleaning.

Designed without welding to avoid rust or micro-fracture weak points. Seamless joints ensure dirt or bodily fluids cannot be trapped.

Capable of withstanding the most rigorous cleaning regime. Suitable for cleaning with NHS approved cleaning solutions and Clinell wipes (or other alcohol based wipes).



## Commodes

# TRANSFER COMMODES



### Structure

Utilises a completely synthetic frame making it durable and lightweight. Coated tube frame design allows for a very high resistance to wear.

Strong, rigid materials also have the added benefit of shock dissipation.

Heavy-duty backrest with aluminium construction to secure patient.

Accessory points are available for the addition of: IV pole, safety belt and arm pads.



### Comfort

Moulded back section features contoured rubber backrest for optimum patient comfort.

The foot rests are height adjustable and swing away when not required.

Seat pad is contoured for patient comfort and features a rear drainage channel for water run-off.



### Ease Of Handling

Arched rear frame section acts as ergonomic push handle and allows for easy and accurate portering.

Fitted with four Ø 125mm castors, two rear locking which can either swivel freely, lock in-line or fully lock.

Arm rests which are easily retractable to enable secure transfer and patient access.

Rubber over-seat has no seams and will not rip/tear.



### Easy Cleaning

Chair can be dismantled within 20 seconds without tools to allow for thorough cleaning.

Designed without welding to avoid rust or micro-fracture weak points. Seamless joints ensure dirt or bodily fluids cannot be trapped.

Capable of withstanding the most rigorous cleaning regime. Suitable for cleaning with NHS approved cleaning solutions and Clinell wipes (or other alcohol based wipes).

# Specifications

## TRANSFER COMMODES

### Shower/Transfer Chair: COMPACT

Oslo – Compact chair: 362.54.00

|                    |                  |
|--------------------|------------------|
| Overall dimensions | 102 x 57 x 60 cm |
| Seat height        | 53 cm            |
| Seat depth         | 40 cm            |
| Seat width         | 47 cm            |
| Armrest height     | 26 cm            |
| Backrest height    | 52 cm            |
| Safe working load  | 130 kg           |
| Product weight     | 15 kg            |

### Shower/Transfer Chair: BRAKING

Bonn – Four braking wheel chair: 343.54.40

|                    |                  |
|--------------------|------------------|
| Overall dimensions | 102 x 64 x 76 cm |
| Seat height        | 56 cm            |
| Seat depth         | 46 cm            |
| Seat width         | 54 cm            |
| Armrest height     | 26 cm            |
| Backrest height    | 52 cm            |
| Safe working load  | 130 kg           |
| Product weight     | 15 kg            |

## Shower Chairs

# STATIC SHOWER CHAIR



### Features

- Manufactured with plastic and aluminium.
- Ergonomically shaped backrest
- Swinging armrests enable easy side transfer
- Non-upholstered seat with hygiene opening
- Non-sliding ferrules for safe standing
- Approved up to 130 kg body weight

### Shower Chair: STATIC

**Zwickau** – Fixed height chair: **332.54.20**

**Wurzburg** – Adjustable height chair: **333.54.20**

|                        |            |
|------------------------|------------|
| Depth                  | 63 cm      |
| Width                  | 57 cm      |
| Fixed seat height      | 51 cm      |
| Adjustable seat height | 50 – 55 cm |
| Seat width             | 46 cm      |
| Seat depth             | 45 cm      |
| Weight                 | 9.2 kg     |
| Safe working load      | 130 kg     |

## Shower Chairs

# COMMODE CHAIR & STOOL



### Features

Manufactured with plastic and aluminium.

Designed to fit over the toilet.

Adjustable height with seven positions.

Approved up to 130 kg body weight.

Available with or without backrest.

### Accessories

- Bucket
- Seat upholstery
- Travel carry bag
- Holder for disposable bags
- Disposable bags

### Chair: COMMODE CHAIR

**Brest** – Commode chair: **362.00.20**

**Lyon** – Commode chair & bucket: **362.00.31**

|                        |               |
|------------------------|---------------|
| Seat height            | 42 – 57 cm    |
| Seat width             | 46 cm         |
| Seat depth             | 40 cm         |
| Max required space     | 51 cm x 59 cm |
| Weight w/o accessories | ~5 kg         |
| Safe working load      | 130 kg        |

### Toilet Frame: STOOL

**Lyon** – Stool with armrests: **Lyon**

|                        |               |
|------------------------|---------------|
| Max required space     | 51 cm x 59 cm |
| Weight w/o accessories | ~5 kg         |

## Shower Chairs

# SHOWER CHAIR & STOOL



Nizza



Cannes

### Features

- Manufactured with plastic and aluminium.
- Designed for patient showering.
- Adjustable height with seven positions.
- Approved up to 130 kg body weight.
- Available with or without backrest.

### Accessories

- Travel carry bag

### Chair: SHOWER CHAIR

Nizza – Shower chair: 363.00.30

|                        |               |
|------------------------|---------------|
| Seat height            | 42 – 57 cm    |
| Seat width             | 40 cm         |
| Seat depth             | 40 cm         |
| Max required space     | 51 cm x 53 cm |
| Weight w/o accessories | ~5 kg         |
| Safe working load      | 130 kg        |

### Toilet Frame: SHOWER STOOL

Cannes – Shower stool with arms: 363.00.20

Monaco – Shower stool (w/o arms): 363.00.10

|                        |               |
|------------------------|---------------|
| Max required space     | 45 cm x 53 cm |
| Weight w/o accessories | ~4 kg         |

Shower Chairs

HEAVY-DUTY SHOWER STOOLS



Features

- Manufactured with plastic and aluminium.
- Designed for patient showering.
- Adjustable height with eight positions.
- Approved up to 175 kg body weight.

Stool: 100KG CAPACITY

Turin – Shower stool: 368.00.20

|                   |            |
|-------------------|------------|
| Seat height       | 46 – 64 cm |
| Seat width        | 32 cm      |
| Seat depth        | 32 cm      |
| Weight            | 1.6 kg     |
| Safe working load | 100 kg     |

Stool: 175KG CAPACITY

Verona – Shower stool: 368.00.30

|                   |            |
|-------------------|------------|
| Seat height       | 42 – 57 cm |
| Seat width        | 36 cm      |
| Seat depth        | 36 cm      |
| Weight            | 2.6 kg     |
| Safe working load | 175 kg     |



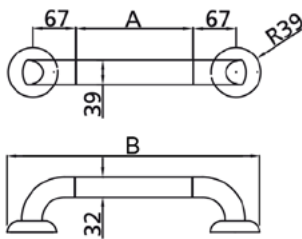
## Shower Accessories

# GRAB RAILS



### Features

- Manufactured with plastic and aluminium.
- Ergonomically shaped for grip and control
- Available in a range of lengths
- Fitted with rose fixings



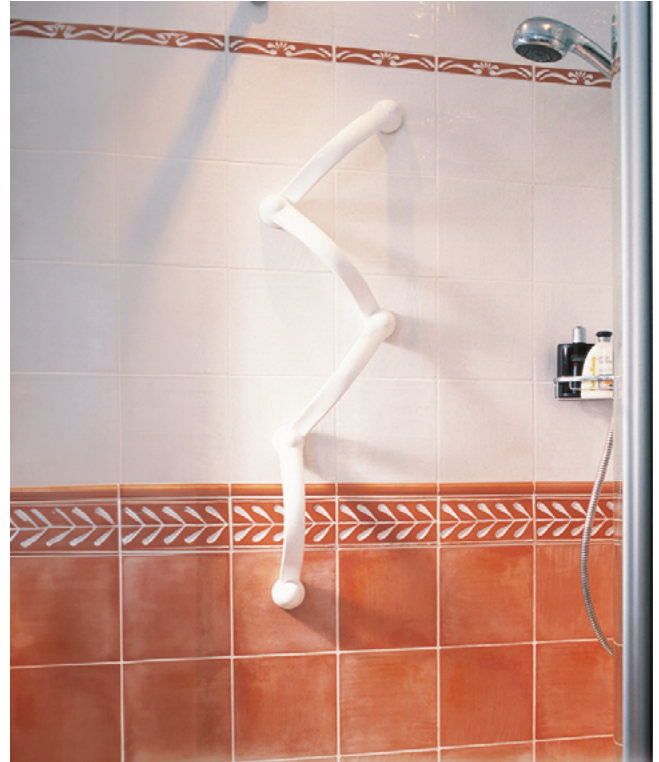
### Grab Rails: SWING RAILS

- 450mm grab rail: **604.05.45**
- 600mm grab rail: **604.05.60**
- 750mm grab rail: **604.05.75**
- 900mm grab rail: **604.05.90**

| Length | Use length (A) | Overall (B) |
|--------|----------------|-------------|
| RAIL45 | 45 cm          | 67 cm       |
| RAIL60 | 60 cm          | 82 cm       |
| RAIL75 | 75 cm          | 97 cm       |
| RAIL90 | 90 cm          | 112 cm      |

## Shower Accessories

# ARCH GRAB RAIL



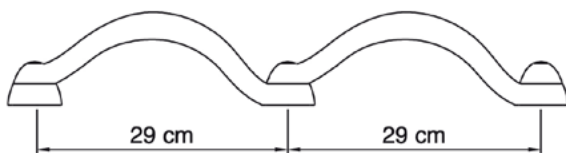
### Features

Manufactured with plastic.

Versatile and adaptable: horizontal, vertical, diagonal

Fitted with rose fixings

Endlessly expandable options



### Grab Rails: CASCADE

Versatile arched grab rail: 601.05.00

|                             |       |
|-----------------------------|-------|
| Length (fitting to fitting) | 29 cm |
|-----------------------------|-------|

## Walking Aids

# PLUS ROLLATOR



### Features

Our plus walker is a stable, lightweight rollator wheeled walker in stylish silver gray. The plus is available in three size versions: small, medium and large. The rollator comes as standard with an integrated shopping bag.

- Powder coated aluminium frame
- Dual action brake at either side of rollator
- Foldable and light weight for easy travelling
- Includes integrated bag
- Airless, puncture-proof tyres for durability

### Rollator: POLO PLUS-T

Large sized rollator: **181.30**

Medium sized rollator: **181.20**

Small sized rollator: **181.10**

| Size          | Small    | Medium   | Large    |
|---------------|----------|----------|----------|
| Depth         | 70 cm    | 70 cm    | 70 cm    |
| Width         | 67 cm    | 67 cm    | 67 cm    |
| Handle Height | 64-74 cm | 69-82 cm | 74-92 cm |
| Seat height   | 49 cm    | 55 cm    | 60 cm    |
| Seat width    | 48 cm    | 48 cm    | 48 cm    |
| Weight        | 7.4 kg   | 7.6 kg   | 7.8 kg   |
| Max. capacity | 120 kg   | 120 kg   | 120 kg   |

# Walking Aids

## COMFORT ROLLATOR



### Features

The comfort rollator is an aluminium frame rollator, fully equipped for daily use to assist with walking. The rollator has integrated shopping bag at the front and includes a walking stick holder on the frame.

- Powder coated aluminium frame
- Dual action brake at either side of rollator
- Soft back pad for comfort when seated
- Foldable and light weight for easy travelling
- Includes integrated back and walking stick holder
- Airless, puncture-proof tyres for durability
- Adjustable handle height with locking slots
- Available in medium or large size

### Rollator: POLO COMFORT

Large sized rollator: **182.30**  
Medium sized rollator: **182.20**

| Size          | Medium   | Large    |
|---------------|----------|----------|
| Depth         | 73 cm    | 78 cm    |
| Width         | 68 cm    | 68 cm    |
| Handle height | 70-83 cm | 77-96 cm |
| Seat height   | 56 cm    | 62 cm    |
| Seat width    | 48 cm    | 48 cm    |
| Weight        | 7.8 kg   | 8 kg     |
| Height slots  | 7 x      | 10 x     |
| Max. capacity | 120 kg   | 120 kg   |



## Ward Furniture

# IV POLES / DRIP STANDS



### Features

These easy-assembly drip stands are manufactured from medical grade stainless steel and high-quality injection moulded parts. All IV poles come with a quick clip drop catcher. The weighted base models include a sturdy handle for help with moveability.

The five-legged bases with swivel castors ensure excellent stability and manoeuvrability. The adjustable height range with simple locking mechanism are perfect for most care home or hospital environments.

- To reduce transport costs and unnecessary packaging IV poles are flat packed.
- Drop catcher with quick clip.
- Two hook or four hook.
- Handle with included with weighted base models.
- Two hook wall mounted version also available.
- Five ESD (Electrostatic dissipative) swivel castors, two of which are locking.
- Drips Stands comply to BS ISO 15375:2010

### IV Poles: MOBILE / WALL MOUNTED

Flat pack 2-hook mobile: **IVDST001**

Flat pack 2-hook mobile, weighted base: **IVDST002**

Flat pack 4-hook mobile: **IVDST003**

Flat pack 4-hook mobile, weighted base: **IVDST004**

2-hook wall mounted: **IVDST005**

|                   |            |
|-------------------|------------|
| Base diameter     | Ø 71 cm    |
| Adjustable height | 129–204 cm |

Ward Furniture

# EASY CLEAN BEDSIDE LOCKERS



## Features

Our Easy Clean Bedside Locker range sees durable construction and exceptional functionality combined. Meeting BS 1765-2:1976, it provides generous storage space, customizable lock features, braked castors and adjustable shelving.

Independently tested and certificated by Fira International Ltd reaching requirements of BS EN 16121:2013 Level 2 Safety, Strength, Durability & Stability.

- Bolted 'through' castors and door fixings for hygiene, strength and longevity
- Available in White, Oak or Grey
- All units come with a lockable item drawer or flap.
- Easy access cupboard with twin doors
- Available with a cam Lock, RFID Lock or digital lock to secure patient belongings
- Optional extras include a white plastic easy clean top, to control spillages. Also the option to add a towel rail and washbowl holder.
- 5 year manufacturer warranty included

## Storage: BEDSIDE LOCKER

- Cupboard & lockable drawer: **ECBSL01**
- Cupboard, lockable drawer & shelf: **ECBSL02**
- Cupboard & lockable flap: **ECBSL03**

|        |       |
|--------|-------|
| Height | 98 cm |
| Width  | 47 cm |
| Depth  | 53 cm |



## Ward Furniture

# EASY CLEAN OVERBED TABLES



### Features

Designed to enhance patient comfort, convenience and safety. Its user-focused, adjustable height mechanism and varying base designs allow for healthcare professionals and patients to create a stable platform.

Our seamless one piece tops allow for easy cleaning to help maximize infection control. Suitable for use over beds and chairs.

Independently tested and certificated by Fira International Ltd reaching requirements of BS 2483:1977.

- Available in straight leg or 'C' shaped base for use with either beds or chairs as required
- Maximum safe working load of 25kg
- Anti-entrapment safety features for safety
- Available with white, oak or grey tabletop
- Available with flat, recessed or upstand tabletop to secure contents
- Seamless one piece tops for easy cleaning and durability
- 5 year manufacturer warranty included

### Tables: OVERBED TABLES

'C' leg base with flat top: **ECOBT01**

'C' leg base with upstand top: **ECOBT02**

'C' leg base with recessed top: **ECOBT03**

Straight leg base with flat top: **ECOBT04**

Straight leg base with upstand top: **ECOBT05**

Straight leg base with recessed top: **ECOBT06**

|                   |             |
|-------------------|-------------|
| Adjustable height | 79-118.5 cm |
| Width             | 90 cm       |
| Depth             | 40 cm       |

## Hospital Furniture

# SHUTTLEWORTH SOFT CLOSE BINS



### Features

- Fire retardant soft close bins
- Manufactured from mild steel
- Powder coated in white epoxy for ease of cleaning
- Pedal operated silent closing lids
- Available with a variety of standard waste segregation coloured lids in adherence to infection control guidelines

### Lid Colours

- White Lid – General Use / Amalgam
- Black Lid – Domestic Waste
- Blue Lid – Medical Waste For Incineration
- Purple Lid – Cytotoxic & Cytostatic Waste
- Red Lid – Anatomical Waste For Incineration
- Orange Lid – Waste Which May Be Treated
- Yellow Lid – Waste for Incineration
- Yellow & Black Lid – Offensive / Hygiene Waste

### Bins: SOFT CLOSE

20 Litre Bin: **BIN020** + LID COLOUR CODE

50 Litre Bin: **BIN050** + LID COLOUR CODE

70 Litre Bin: **BIN050** + LID COLOUR CODE



ADD -WHT

ADD -BLA

ADD -BLU

ADD -PUR



ADD -RED

ADD -ORA

ADD -YEL

ADD -YBL

|                |                     |
|----------------|---------------------|
| 20L Dimensions | 27.5 x 34 x 50 cm   |
| 50L Dimensions | 39.5 x 41 x 58.5 cm |
| 70L Dimensions | 39.5 x 41 x 75 cm   |

# SHUTTLEWORTH SACK HOLDERS



## Features

- Created with corrosive resistant materials
- Easy to clean design with soft close lids via foot pedal
- Supplied fully assembled
- Elasticated cord and finger loop for securing waste bag
- Available with a variety of standard waste segregation coloured lids in adherence to infection control guidelines

## Lid Colours

- White Lid – General Use / Amalgam
- Black Lid – Domestic Waste
- Yellow Lid – Waste for Incineration

## Bins: SACK HOLDERS

- 20 Litre Bin: **BINSH020** + LID COLOUR CODE
- 70 Litre Bin: **BINSH070** + LID COLOUR CODE
- 90 Litre Bin: **BINSH090** + LID COLOUR CODE



ADD -WHT



ADD -BLA



ADD -YEL

|                |                     |
|----------------|---------------------|
| 20L Dimensions | 58.7 x 23.5 x 28 cm |
| 70L Dimensions | 81.4 x 40 x 39 cm   |
| 90L Dimensions | 93.4 x 40 x 39 cm   |

## Dispensers

# WALL DISPENSING UNITS



### Features

Dispenser units are designed to aid in infection control processes and allow easy access to PPE. Typically wall-mounted these dispensers offer a quick, practical solution for the routine replacement of disposables.

- Manufactured from mild steel
- Wall mounting to allow convenient storage
- Easy removal for complete cleaning of the unit
- Powder coated white epoxy for ease of cleaning

### Trolley: DRESSING TROLLEYS

Hand gel holder: **DSP001**

Single apron dispenser: **DSP003**

Horizontal triple glove dispenser: **DSP002**

Vertical triple glove dispenser: **DSP004**

Vrt. Triple glove & single apron dispenser: **DSP005**

Hrz. Triple glove & single apron dispenser: **DSP006**

# Trolleys

## SS DRESSING TROLLEYS



### Features

Stainless steel dressing trolleys designed for the efficient organisation and transport of medical supplies. Manufactured from high-quality stainless steel, these trolleys offer durability, hygiene and are corrosion resistant

Ideal for hospitals, clinics, and other medical facilities, these help make it easier for healthcare professionals to deliver patient care swiftly and effectively.

- Manufactured with 1.5mm 304 Grade stainless steel
- Each trolley includes one flat and three edged-up sides (sides and rear) to secure contents on shelves
- Mounted on four anti-static castors
- Designed with smooth surfaces and easy-to-clean design help maintain sterility

### Trolley: DRESSING TROLLEYS

- Small Dressing Trolley: **DRT004**  
Medium Dressing Trolley: **DRT014**  
Large Dressing Trolley: **DRT018**  
X-Large Dressing Trolley: **DRT036**

|                    |                     |
|--------------------|---------------------|
| Small dimensions   | 460 x 460 x 917 mm  |
| Medium dimensions  | 760 x 460 x 915 mm  |
| Large dimensions   | 930 x 470 x 895 mm  |
| X-Large dimensions | 1220 x 460 x 915 mm |

# Trolleys

# MEDICAL STORAGE TROLLEYS



## Features

Comprehensive range of medical trolleys is designed for quick access storage in medical environments. These trolleys are available in single or double column variations, with the option of either narrow or wide depths.

Combine this with your preferred choice of the four tray configurations to create a trolley built for your needs.

- All relevant storage trays are included as standard
- Manufactured from mild steel
- Powder coated in white epoxy for ease of cleaning
- Recessed top tray to secure contents
- Mounted on 100mm swivel castors

## Storage Trolleys: A4 SINGLE COLUMN

Enclosed sides: **MST002**

Enclosed sides & locking door: **MST003**

|                    |                      |
|--------------------|----------------------|
| Trolley Dimensions | 411 x 467 x 947.5 mm |
|--------------------|----------------------|

## Storage Trolleys: A4 DOUBLE COLUMN

Enclosed sides: **MST014**

Enclosed sides & locking door: **MST015**

|                    |                      |
|--------------------|----------------------|
| Trolley Dimensions | 762 x 467 x 947.5 mm |
|--------------------|----------------------|

## Storage Trolleys: A3 SINGLE COLUMN

Enclosed sides & bow handles: **MST029**

Enclosed sides, bow handles, locking door: **MST030**

|                    |                       |
|--------------------|-----------------------|
| Trolley Dimensions | 565 x 467 x 1037.5 mm |
|--------------------|-----------------------|

## Accessories

# MEDICAL STORAGE TROLLEYS



### Features

We offer a selection of popular accessories to compliment our medical storage trolleys. These allow healthcare professionals to further cater their trolley configuration to individual requirements.

These equipment holders mount to the side of the trolley and allow quick access to useful medical equipment that may be required by staff.

- Mounts to the side of any storage trolley configuration
- Available for a range of equipment that may be required for use with the trolley
- Sharps bin holder is adjustable to accommodate a variety of sizes of sharps bins

### Accessories: EQUIPMENT HOLDERS

Glove box holder: **TRAC02**

Hand-gel holder: **TRAC03**

Clipboard/document holder: **TRAC04**

Adjustable Sharps bin holder: **TRAC05**





[www.medi-plinth.co.uk](http://www.medi-plinth.co.uk)

7-11 Holywells Road, Ipswich, Suffolk IP3 0DL – Call: +44 (0) 1473 212010